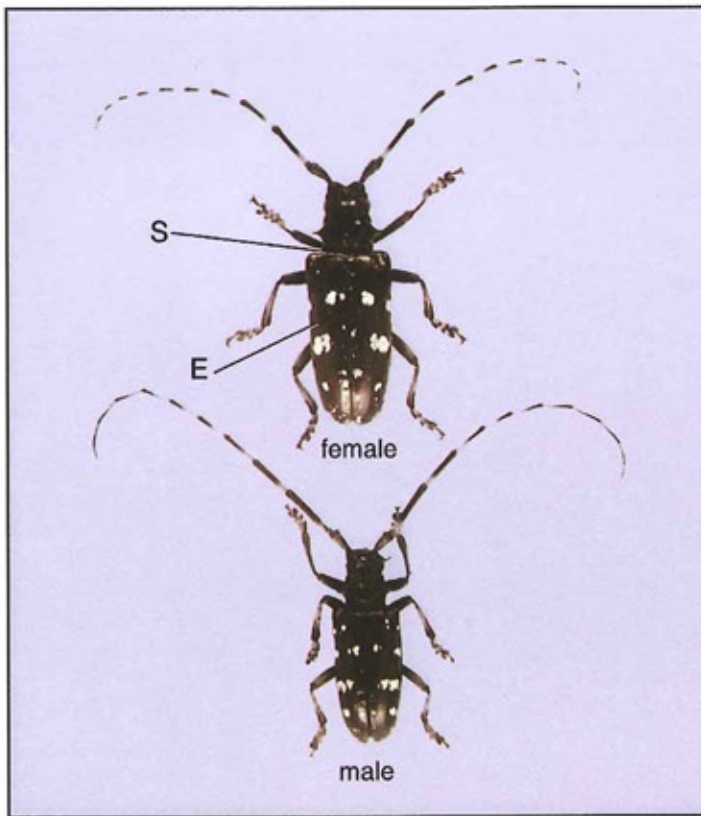


Asian Longhorned Beetle or Whitespotted Sawyer?



Asian Longhorned Beetle

Anoplophora glabripennis (Motschulsky)

Origin and North American Range:

Native to Asia; immigrant in North America (Brooklyn and Amityville, NY); interceptions of this species have occurred at ports of entry in North America.

Hosts: Adults are drawn to recently felled, stressed, or apparently healthy hardwood trees.

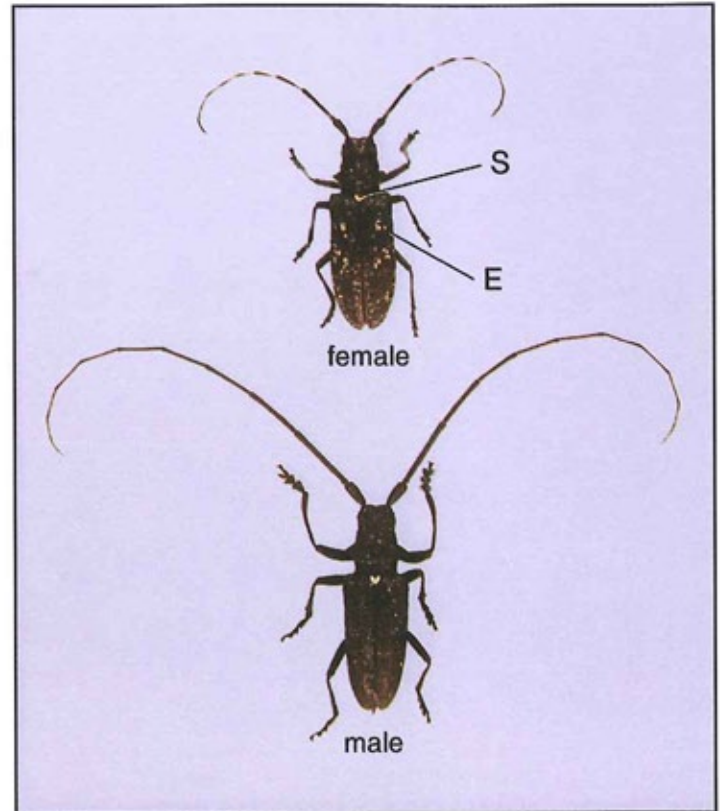
Overall appearance: Glossy black; very smooth and finely punctate (having microscopic dimples); 20-35 mm long.

Elytra (E): Both sexes have up to 20 irregularly distinct white spots.

Scutellum (S): Generally black.

Antennae: Segments 3-11 distinctly banded white and black in both sexes;
Female- antennae usually 1.3 times body length;
Male- antennae usually 2.5 times the body length.

Legs: In both sexes, bluish-white especially on the dorsal surface.



Whitespotted Sawyer

Monochamus scutellatus (Say)

Origin and North American Range:

Native to North America; transcontinental from Alaska throughout Canada (and the Northern United States) and southward to North Carolina in the east and New Mexico in the west.

Hosts: Adults are drawn to dying, stressed, or recently felled conifers.

Overall appearance: Generally bronzy-black; coarsely and roughly punctate; 15-28 mm long.

Elytra (E): Female- generally mottled with whitish patches;
Male- generally completely bronzy-black.

Scutellum (S): Generally white (covered with white or ashy-colored scales).

Antennae: Female- faintly banded gray and black; slightly longer than the body;
Male- all black; much longer than the body.

Legs: In both sexes, generally dark or slightly grayish-black overall.



Photographs and descriptions by E. Richard Hoebeke, Senior Extension Associate,
Department of Entomology, Cornell University.

NA-PR-01-98
Reprinted August 2002